

色谱柱: SinoChrom ODS-BP (4.6\*250mm, 5 μm)

流动相: A-0.1%磷酸水, B-乙腈

0min 95%A+5%B

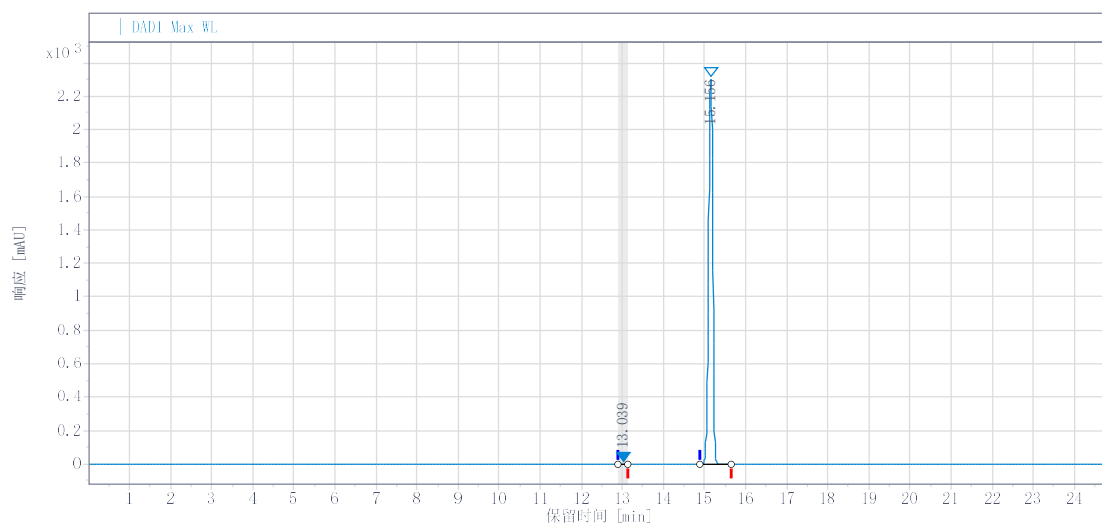
25min 5%A+95%B

流速:1.0 ml/min

柱温: 30°C

检测器: DAD 280nm

溶剂: 甲醇



#	RT (min)	峰面积	峰面积 %	峰高
1	13.039	27.391	0.168	4.483
2	15.156	16291.335	99.832	2301.599

